

Connecting to FileMaker Pro 10 from Home Using Internet Explorer

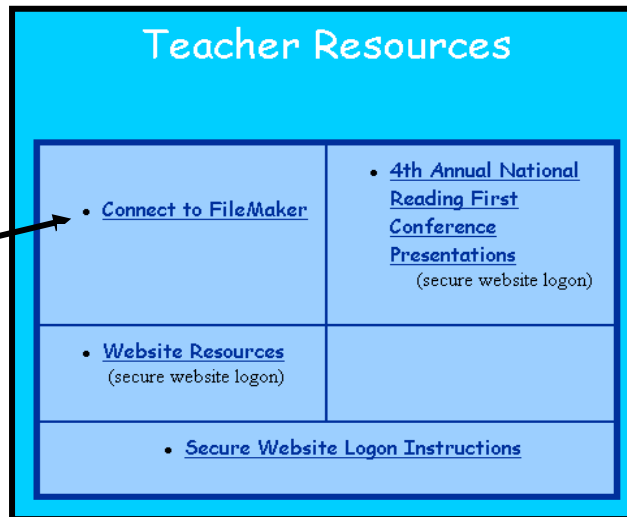
Open **Internet Explorer**

Type **www.plainfieldschools.org**

Click on **Teacher Resources**



Click on **Connect to FileMaker**



Click on **Connect to FileMaker**



Type the following information:

Name: your_login_name
i.e. smithj

Password: your_network_password

Click **Login**

Please Login

Name:

Password:

Click on **FileMaker Pro – Click Me to Start**

Plainfield Public Schools

[Activate SSL-VPN Tunnel Mode](#)

SSL VPN Session Info

Login Name:	simoneaum (0 hour(s), 14 minute(s), 22 second(s))
HTTP Inbound/Outbound Traffic:	0 bytes / 0 bytes
HTTPS Inbound/Outbound Traffic:	0 bytes / 0 bytes

Pre-defined Bookmarks

Bookmark	Details
▼ RDP	
FileMaker Pro - Click Me to Start	rdp://10.52.10.10

My Bookmarks

Bookmark	Details
----------	---------

Tools

Test for Reachability(Ping)

RDP to Host

If you would like to adjust the screen size displayed modify the default screen size to the optional screen size which will give you a bigger FileMaker window.

Default:

Screen Width: 1024
Screen Height: 768

Optional Screen Sizes:

Screen Width: 1280
Screen Height: 1024

Click on **Ok**

Plainfield Public School

Launching RDP session...
Connecting to:10.52.10.10

Screen Width: 1024
Screen Height: 768

Type the following information:

Name: your_login_name
i.e. smithj

Password: your_network_password

Click **OK**



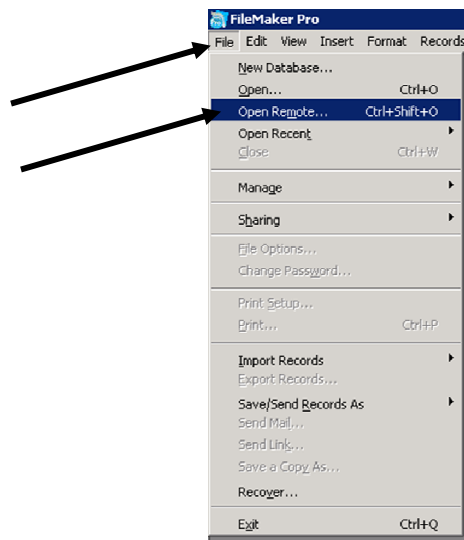
Select **Do not show Quick Start Again**

Click **OK**



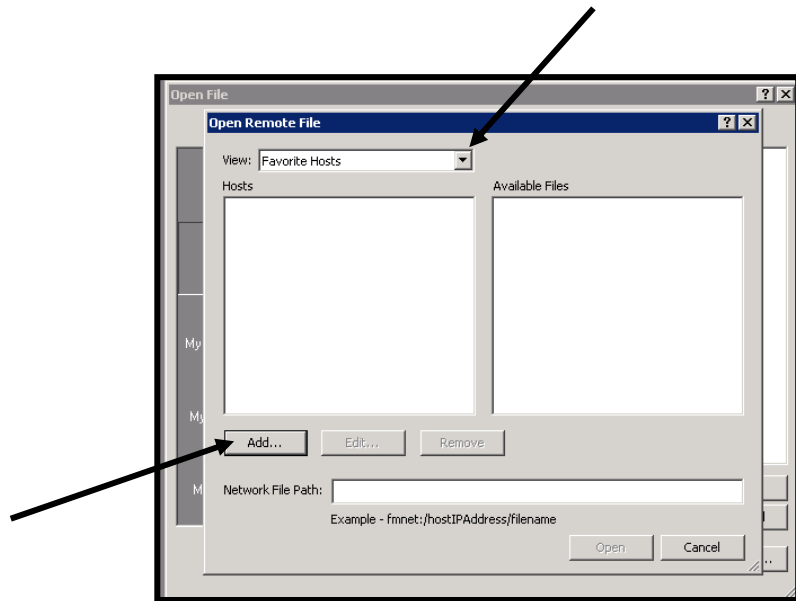
From the menu, Click on **File**

Select **Open Remote**



Select **Favorite Hosts**

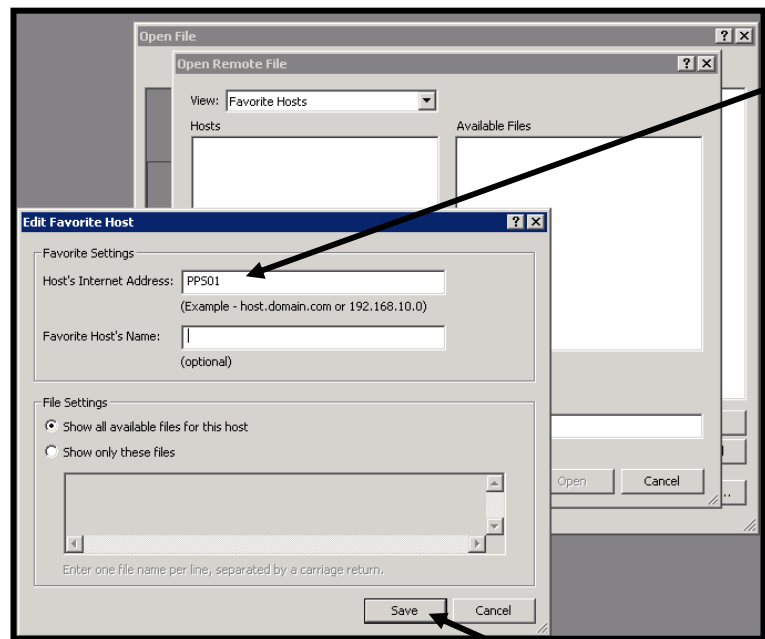
Click on **Add...**



For the **Host's Internet Address**:

Type **PPS01**

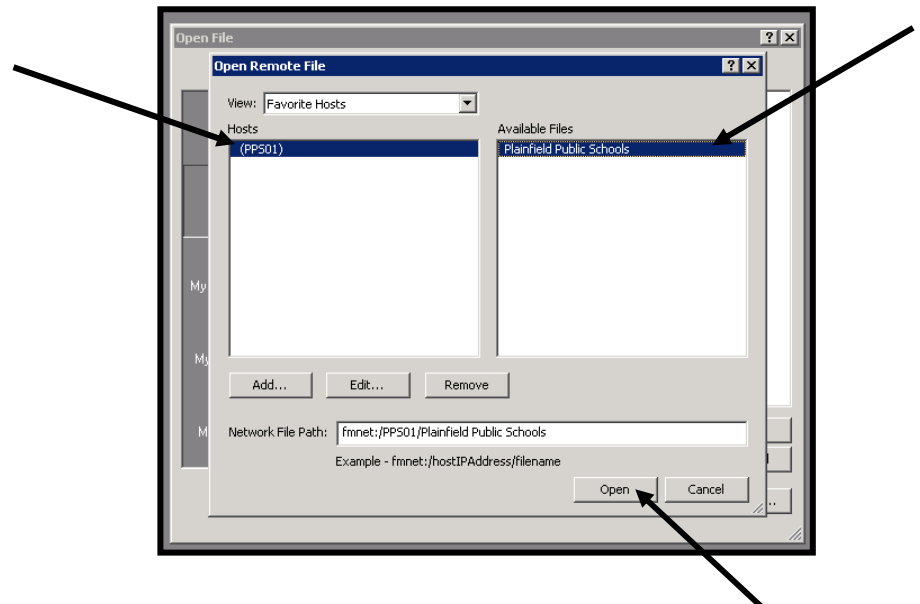
Click **Save**



Select **PPS01**

Click on **Plainfield Public Schools**

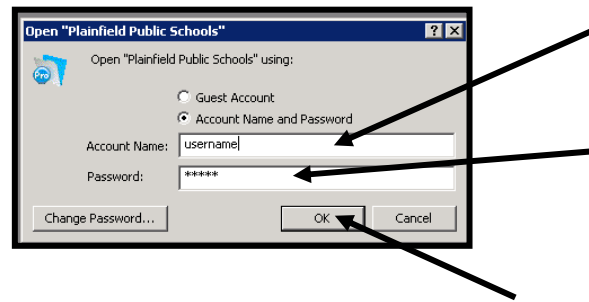
Click **Open**



Type your FileMaker,
Account Name:

Type your FileMaker,
Password:

Click **OK**

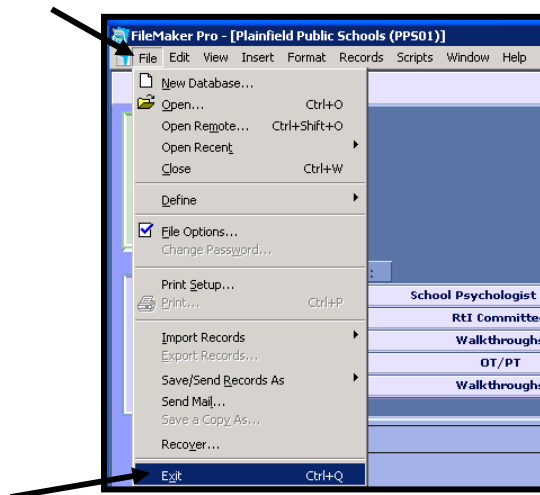


When Done Using FileMaker,

From the **Menu**,

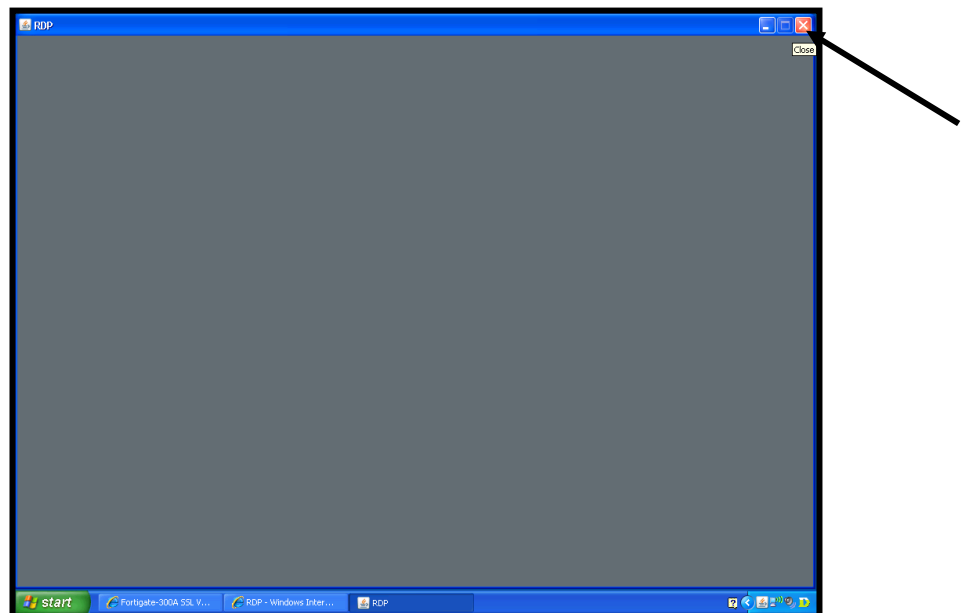
Select **File**

Click on **Exit**



To Close the Window

Click on the **X**
(upper right hand corner)



To Completely Disconnect from the FileMaker Home Session

Click on the Logout Button
(upper right hand corner)

