



# M.E.S. MOOSETACULAR NEWS



2011

## Important Dates to Remember



### **Thursday, June 2**

Principal of PMS – Mrs. Gandolf  
Visits Grade 3



### **Friday, June 3**

Grade 1 Roger Williams Zoo  
Grade 3 Field Day



### **Monday, June 6**

Grade 3 visits PMS



### **Wednesday, June 8**

2<sup>nd</sup> Grade Picnic

### **Thursday, June 9**

Grade 3 to Bluff Point  
PM K Concert



### **Friday, June 10**

Book Character Parade



### **Monday, June 13**

PM Kindergarten Field Day  
Pull Tab Assembly

### **Tuesday, June 14**

Grade 2 Field Day  
& AM K – T/Th AM & PM PK



### **Thursday, June 16**

Grade 1 Field Day

### **Friday, June 17**

Mr. Walter Day/1<sup>st</sup> Grade Picnic  
Field Day W/F Pre K



### **Monday, June 20**

K - Completion Ceremony 9:30/1:15

### **Wednesday, June 22**

Grade 3 Picnic & Presentation of  
Certificates



### **Thursday, June 23**

Spotlight Awards!  
SPIRIT DAY!



### **Friday, June 24**

Sunglasses Day  
12:40 Early Dismissal – Last Day

Visit our web site: [www.plainfieldschools.org](http://www.plainfieldschools.org)

Dear Families and Friends of MES,



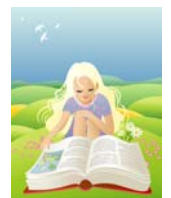
It is hard to believe that the 2010-2011 school year will come to a close at the end of this month. I would like to take this opportunity to thank everyone who has made this year such a success. The students at MES have had countless opportunities to learn thanks to dedicated teachers and staff members. Support from the PTO served to enhance the curriculum at every grade level. Numerous volunteers devoted their time and talents on a regular basis to ensure that students took home leveled readers or had the proper materials needed to engage in lessons. Community members and businesses donated supplies and services in order to invest in our future. Parents spent evenings checking homework and made it a priority to attend meetings and special events. MES is a wonderful school because of all of you!

It is a bittersweet moment as I officially share with you that I will be leaving MES at the end of the school year to assume a principal position in another district closer to my home. It has been an honor to work at MES, and I truly hope that MES continues to be an outstanding place for children to learn and grow academically, socially, and emotionally. I will carry with me fond memories of my two years at MES.

Due to the excess number of snow days this year, the last day of school will be Friday, June 24<sup>th</sup>. It will be a half day. Please take a few minutes to mark your calendar with the upcoming events as listed in the newsletter. June looks to be the busiest month yet! Make sure to watch for information about the Governor's Summer Reading Challenge as well as other opportunities in which your child might want to participate during the dog days of summer.

Wishing all of you a safe and happy summer,

Anne Hogsten  
Principal



## To our outgoing Third Grade Students:

## Happy Learning at Plainfield Memorial School!



We are very proud of your accomplishments!



### Most Cooperative

Cole, Jhamara, Sara, Lily, Hailey, Glenn, Dylan, Madison, Olivia, Sebastian, Amelia, Lauren, Abby, Seth, Aidan, Cassandra, Lindsay, James, Kristen, Nickalis, Jayden, Ryley, Levi, Caleb, Tucker, Sydney, Ian, Brookelyn

### Reader of the Month



Ayana, Jacob, Joseph, Mishaal, Tiana, Joseph, Sydney, Sebastian, Kyle, Dalayna, McKayla, Evan, Ashlyn, Madison

### Writer of the Month



Caleb, Fiona, Jada, Andrew, Destinie, Hayden, Riley, Zachary, Damian, Joseph, Caden, Hailey, Mitchell, MaKenna

### Mathematician of the Month



John, Josemanuel, Cole, Tatyanna, Alice, Liam, Dominick, Sanie, Taylor, Mia, Andrew, Evan, Damien, Brody

### Fitness Award of the Month



Rachel, Lucas, Stella, Zoe, Donovan, Kennedy, Evan, Kate

### Music Maker of the Month



Shelby, Jack, Daylana, Braeden, Julie, Seth

### Art Award of the Month



Gabriella, Kennedy



Have a great Summer!!

### Bookworm of the Month



Gabriella, Sanie, Zac, Brody

### Summer Moving



If you are moving or changing day care providers (causing your child's school to change), please call the school office as soon as possible. In mid-August, all MES students will receive classroom and bus information to begin the new school year, including the name of their teacher.

### Report Cards



Report cards are given to students on June 24. If your child is not in school on June 24, you may pick up the report card in the office from 7:00 AM - 4 PM during the summer. Students who owe money for a recorder or lost book will not receive a report card until items are returned or paid for.



As the weather becomes warmer, please remember that flip flops, midriff tops, short shorts and short skirts are prohibited. Students play outside every day. Proper attire is necessary for safety.



Please continue to collect Box Tops, Printer Cartridges, Soup Labels, Capri Sun, and Pull Tabs throughout the summer months. Sincere Thanks!